

My Old Kentucky Home

www.jaybuckey.com

Arrangement by Jay Buckey

Key of A, capo 2 and play in G

By Stephen Foster (July 4, 1826 - January 13, 1864)

G

C

G

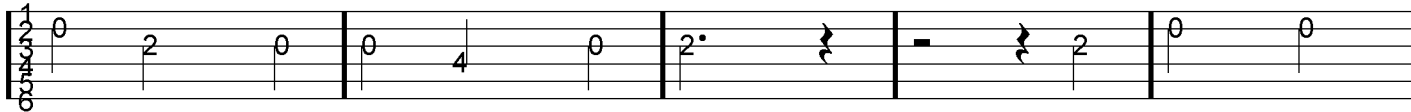


The sun shines bright on my old Ken - tuck - y home 'Tis
 They hunt no more for the pos - sum and the coon, On
 The head must bow and the back will have to bend, Where -

A7

D

G

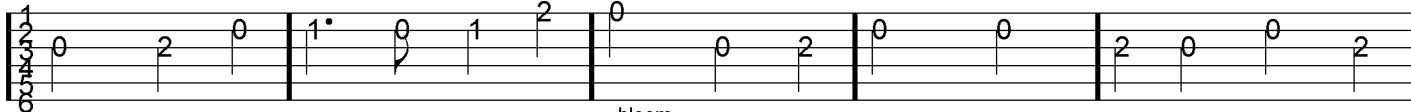


sum - mer the dark - ies are gay. The corn top's
 mea - dow, the hill and the shore. They sing no
 ev - er the poor folks may go. A few more

C

G

D

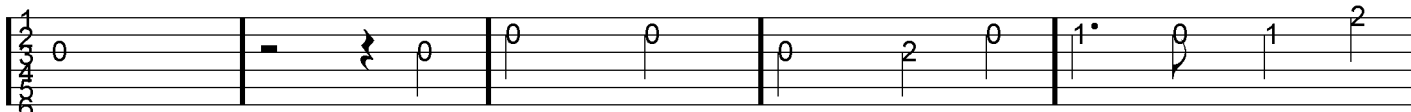


bloom,
 ripe and the mead - dow is in moon, While the birds make mu - sic all the
 more by the glim - mer of the end, On the bench by that old - cab - in
 days and the trou - ble will In the field where su - gar canes may

G

G

C



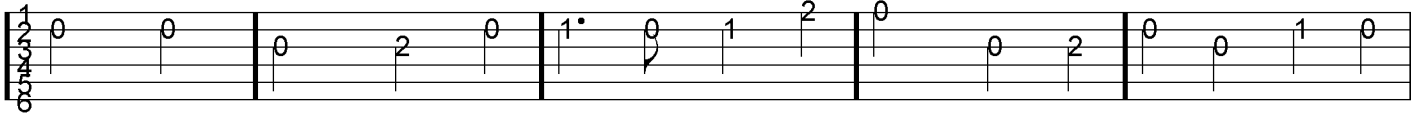
day. The young folks roll on the lit - tle cab - in
 door. The day goes by like a sha - dow o'er the
 grow. A few more days for to tote the wear - y

G **A7** **D**



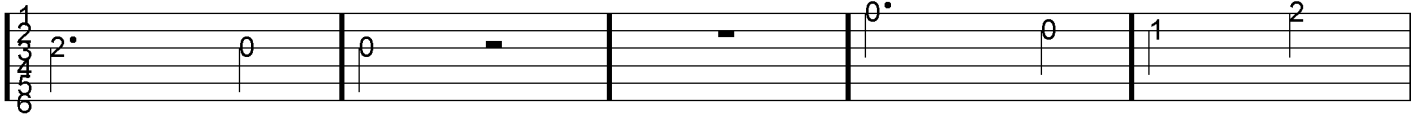
floor, All mer - ry, all hap - py and bright. By'n'
heart, With sor - row where all was de - light. The
load, No mat - ter, 'twill nev - er be light. A

G **C** **G**



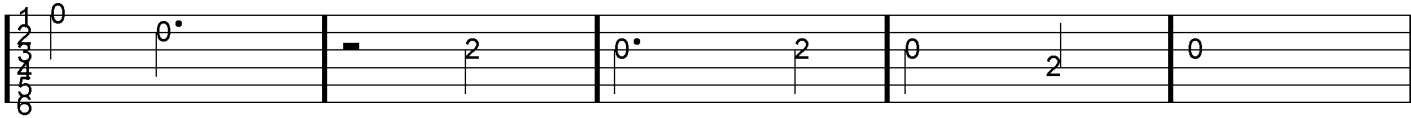
bye hard times comes a - knock - ing at the door, Then my old Ken - tuck - y
time has come when the dark - ies have to part, Then my old Ken - tuck - y
few more days till we tot - ter on the road, Then my old Ken - tuck - y

D **G** **G** **C**



home good night. Weep no more my
home, good night.
home, good night.

G **C** **G**



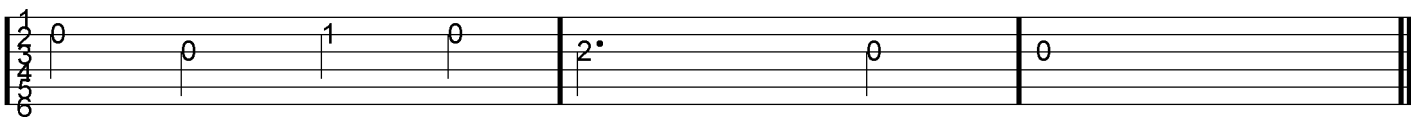
la - dy, Oh! weep no more to - day.

C **G**



We will sing one song for my old Ken - tuck - y home, For my

D **G**



old Ken - tuck - y home far a - way.

My Old Kentucky Home

www.jaybuckey.com

Arrangement by Jay Buckey

Key of A, capo 2 and play in G

By Stephen Foster (July 4, 1826 - January 13, 1864)

G **C** **G**

The first line of guitar tablature consists of three measures. The first measure is a whole note chord G (000033) with a capo 2. The second measure is a whole note chord C (320333) with a capo 2. The third measure is a whole note chord G (000033) with a capo 2. The time signature is 4/4.

A7 **D** **G**

The second line of guitar tablature consists of three measures. The first measure is a whole note chord A7 (020027) with a capo 2. The second measure is a whole note chord D (777777) with a capo 2. The third measure is a whole note chord G (000033) with a capo 2. The time signature is 4/4.

C **G** **D**

The third line of guitar tablature consists of three measures. The first measure is a whole note chord C (320333) with a capo 2. The second measure is a whole note chord G (000033) with a capo 2. The third measure is a whole note chord D (200022) with a capo 2. The time signature is 4/4.

G **G** **C**

The fourth line of guitar tablature consists of three measures. The first measure is a whole note chord G (000033) with a capo 2. The second measure is a whole note chord G (000033) with a capo 2. The third measure is a whole note chord C (320333) with a capo 2. The time signature is 4/4.

G **A7** **D**

G **C** **G**

D **G** **G** **C**

G **C** **G**

G **C** **G**

D **G**